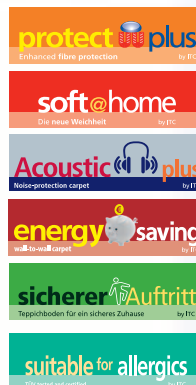


# Akzento AB-C<sub>fl</sub>-s1

1/10" Frisé bedrukt	1/10" Frisé imprimé	1/10" Frisé bedrukt	1/10" twist pile printed
<b>100% polyamide IMPREL®</b>	<b>100% polyamide IMPREL®</b>	<b>100% Polyamid IMPREL®</b>	<b>100% nylon IMPREL®</b>
<b>gethermofixeerd</b>	<b>thermofixé</b>	<b>thermofixiert</b>	<b>heatset</b>
<b>RUG</b> Action Back	<b>DOSSIER</b> Action Back	<b>RÜCKEN</b> Action Back	<b>BACKING</b> Action Back
<b>POOLHOOGTE</b> ± 5.5 mm	<b>HAUTEUR DU VELOURS</b> ± 5.5 mm	<b>POLHÖHE</b> ± 5.5 mm	<b>PILE HEIGHT</b> ± 5.5 mm
<b>TOTALE HOOGTE</b> ± 7.5 mm	<b>HAUTEUR TOTALE</b> ± 7.5 mm	<b>GESAMTHÖHE</b> ± 7.5 mm	<b>TOTAL HEIGHT</b> ± 7.5 mm
<b>POOLGEWICHT</b> ± 860 g/m <sup>2</sup>	<b>POIDS DU VELOURS</b> ± 860 g/m <sup>2</sup>	<b>POLGEWICHT</b> ± 860 g/m <sup>2</sup>	<b>PILE WEIGHT</b> ± 860 g/m <sup>2</sup>
<b>TOTAAL GEWICHT</b> ± 1.940 g/m <sup>2</sup>	<b>POIDS TOTAL</b> ± 1.940 g/m <sup>2</sup>	<b>GESAMTGEWICHT</b> ± 1.940 g/m <sup>2</sup>	<b>TOTAL WEIGHT</b> ± 1.940 g/m <sup>2</sup>
<b>AANTAL NOPPEN/M<sup>2</sup></b> ± 161 500	<b>NOMBRE DE POINTS/M<sup>2</sup></b> ± 161 500	<b>NOPPEN/M<sup>2</sup></b> ± 161 500	<b>TUFT DENSITY/M<sup>2</sup></b> ± 161 500
<b>AANBEVOLEN LEGWIJZE</b> • Spannen	<b>POSE PRÉCONISÉE</b> • Tendre	<b>EMPFOHLENE VERLEGEART</b> • Verspannen	<b>INSTALLATION METHOD</b> • Stretching
<b>GEBRUIK</b> • Klasse 22+: Huishoudelijk • Comfort: 2** • Trappen (wonen) • Brandkl. C <sub>fl</sub> -s1 EN 13501-1 • Geschikt v. vloerverwarming	<b>UTILISATION</b> • Classe 22+: Domestique général • Confort: 2** • Escaliers (Habit.) • Classement feu C <sub>fl</sub> -s1 EN 13501-1 • Compatible avec sol chauffant • Résistance thermique: ISO 8302: 0.16 m <sup>2</sup> K/W	<b>EINSATZ</b> • Klasse 22+: stark • Komfort: 2** • Treppengeeignet (W) • Baustoffkl. C <sub>fl</sub> -s1 EN13501-1 • Geeignet f. Fussbodenheizung • Wdw. ISO 8302: 0.16 m <sup>2</sup> K	<b>USAGE</b> • Class 22+: Heavy domestic • Komfort: 2** • Stairs domestic • Fire resist. C <sub>fl</sub> -s1 EN13501-1 • Suitable f. floorheating
<b>BIJZONDERHEDEN</b> • Soft@home • Vuilafstotend • Geschikt v. allergische personen	<b>EXTRAS</b> • Soft@home • Traitement anti-salissure • Convient aux personnes allergiques	<b>EXTRAS</b> • Soft@home • Faserschutz gegen Schmutz • Für Allergiker geeignet	<b>EXTRAS</b> • Soft@home • Anti-soil protection

Onder voorbehoud van wijzigingen van de technische specificaties - Sous réserve de modifications techniques - Unter Vorbehalt von technischen Änderungen - All rights reserved to alter technical specification



RAPP/RACC./REP.: - BREITE/LARGEUR/WIDTH: 5.2 cm - HÖHE/HAUTEUR/HEIGHT: 5.2 cm

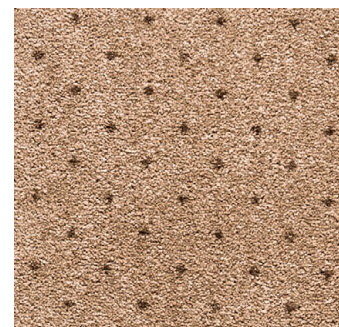
<b>Akzento</b>	10	22	35	44	65	77	93	94	98
<b>AB CA. 4M</b>	●	●	●	●	●	●	●	●	●



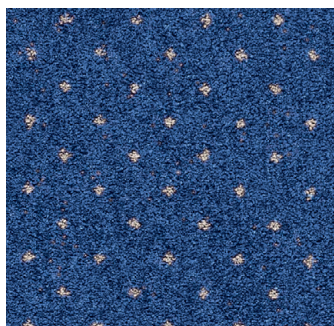
ITC \_ Kanegemstraat 15 \_ B-8700 Tielt TEL. +32 51 42 44 11 FAX +32 51 42 44 85



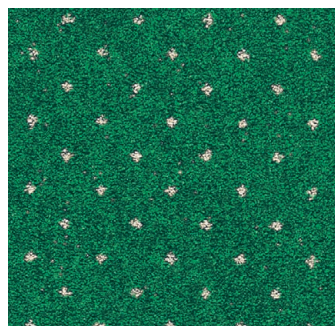
# Akzento AB-C<sub>fl</sub>-s1



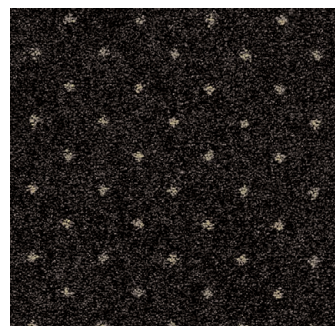
400 cm 35



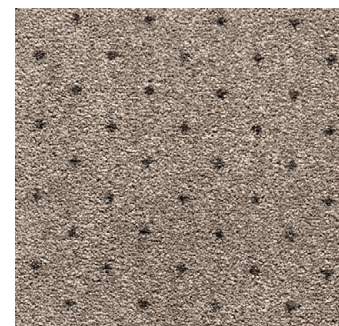
400 cm 77



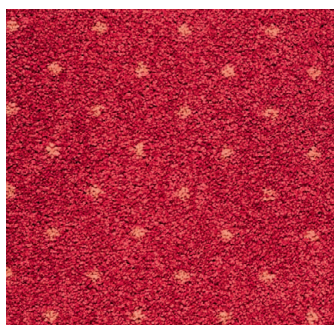
400 cm 22



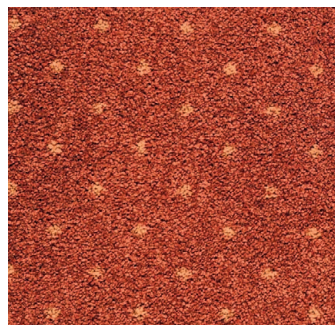
400 cm 98



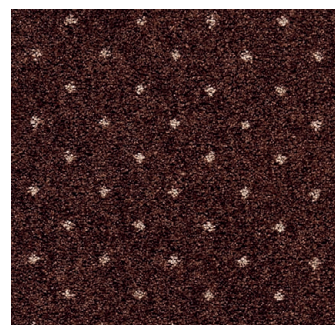
400 cm 93



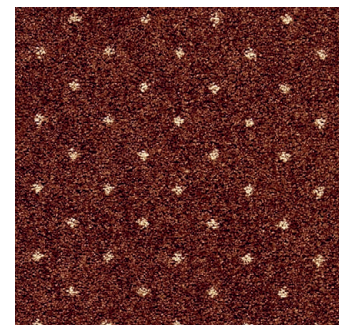
400 cm 10



400 cm 65



400 cm 94



400 cm 44

ITC \_ Kanegemstraat 15 \_ 8700 Tielt \_ Belgium  
TEL. +32 51 42 44 11 FAX +32 51 42 44 85  
Email: [itc@baltagroup.com](mailto:itc@baltagroup.com) [www.baltagroup.com](http://www.baltagroup.com)

